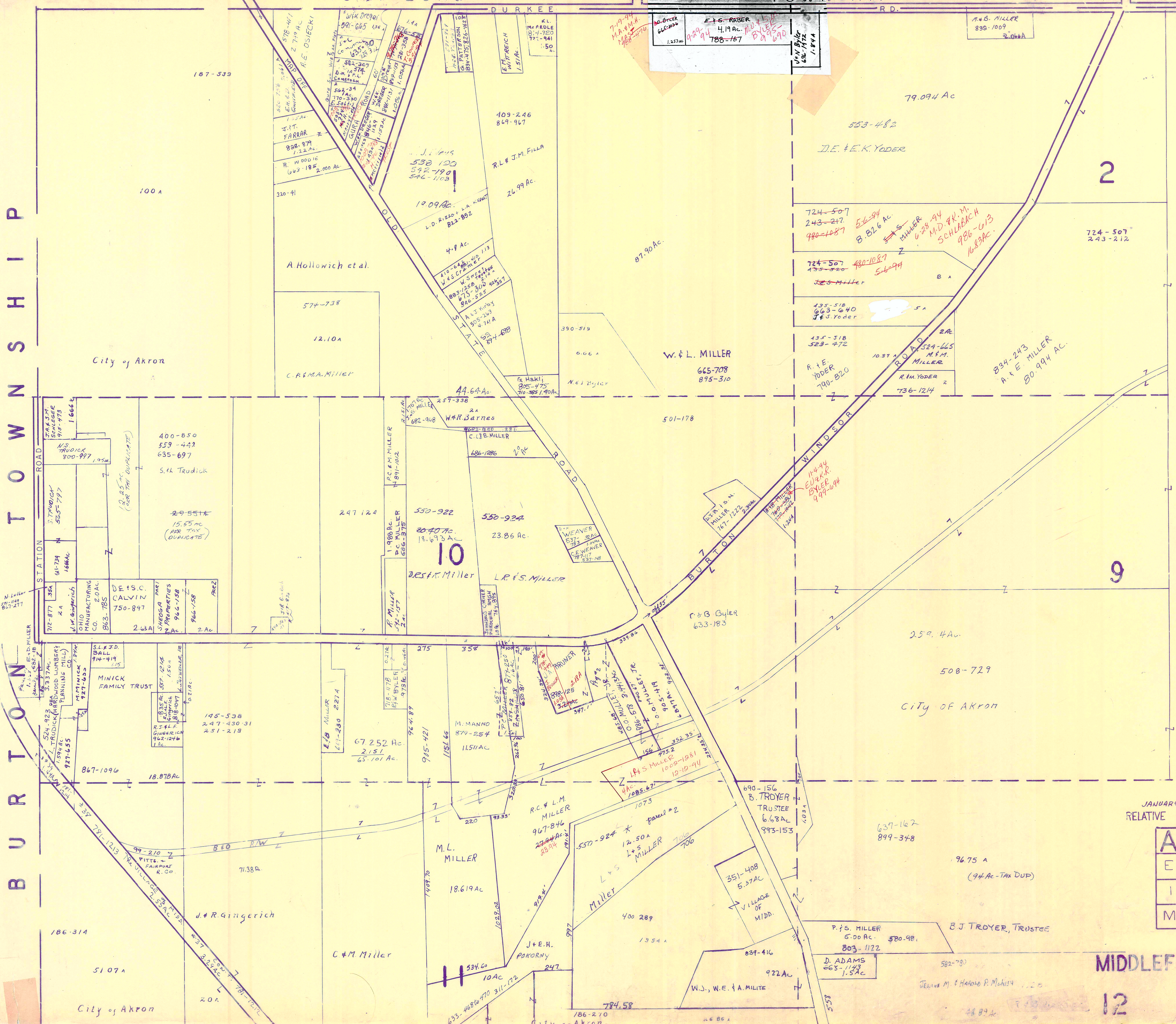


BURTON TOWNSHIP



* Inadequate Description



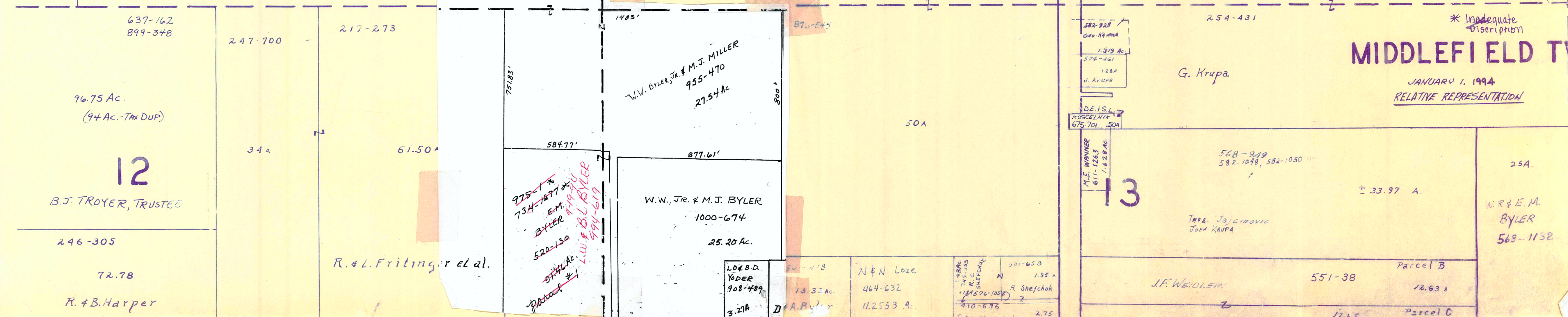
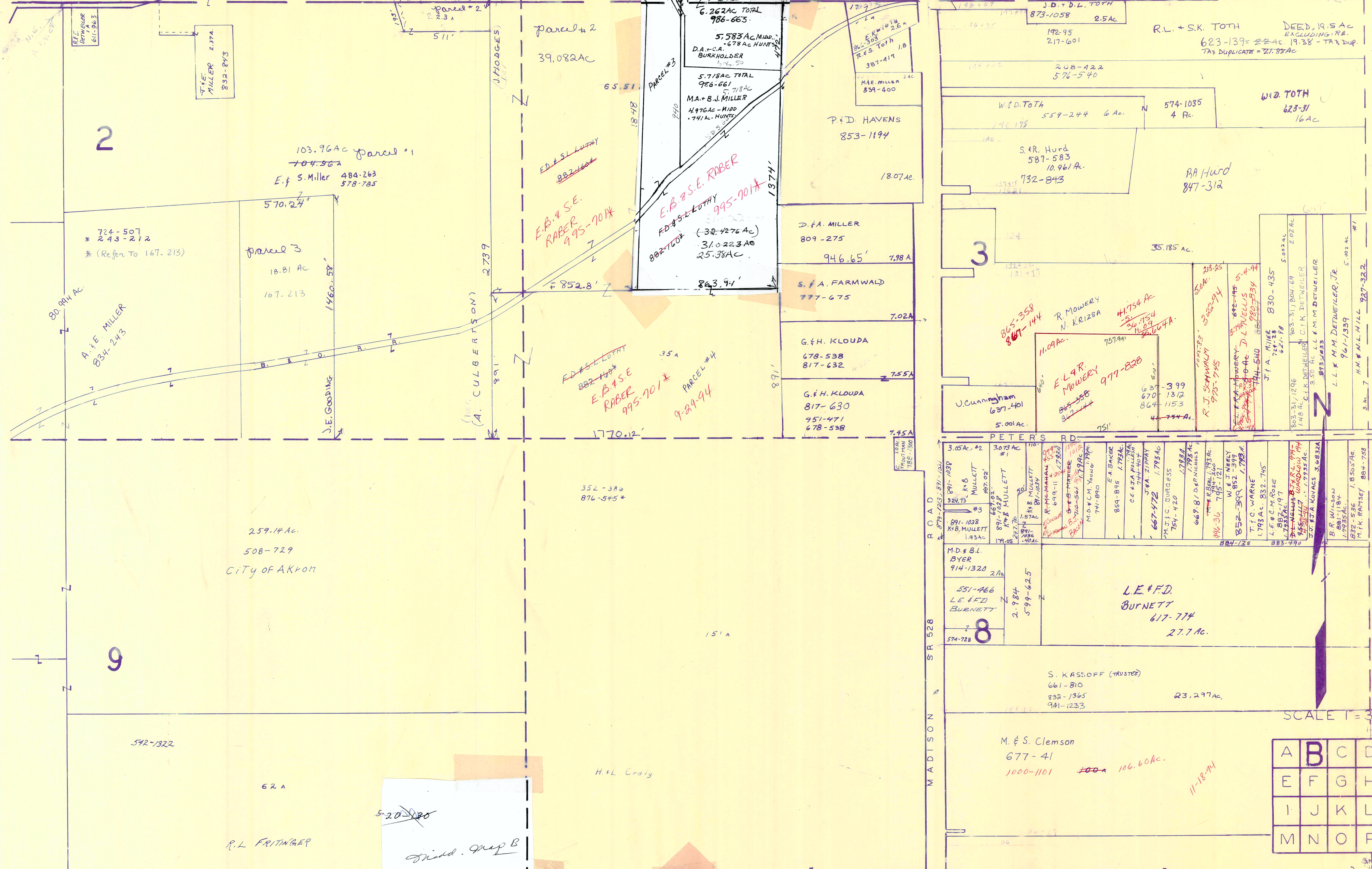
SCALE 1"=300'

JANUARY 1, 1994
RELATIVE REPRESENTATION

A	B	C	D
E	F	G	H
I	J	K	L
M	N	O	P

MIDDLEFIELD TWP

12



A	B	C	D
E	F	G	H
I	J	K	L
M	N	O	P

MIDDLEFIELD TWP.

JANUARY 1, 1994
RELATIVE REPRESENTATION

* Inadequate Description

W & E M. BYLER
568-1132

Parcel B
J.F. Weidlein
551-38
Parcel C
12.63
12.65

G. Krupa
254-431
568-949
582-1048, 582-1050
± 33.97 A.

M. & S. Clemson
677-41
1000-1101
100-A 106.60Ac.
27.7 Ac.

S. KASSOFF (TRUSTEE)
661-810
833-1365
941-1233
23.297Ac.

L.E. & F.D. BURNETT
617-714
27.7 Ac.

M.D. & B.L. BYER
914-1320
551-466
LE & FD BURNETT
574-728
2.784
579-625

J. Cunningham
637-401
5.001Ac.

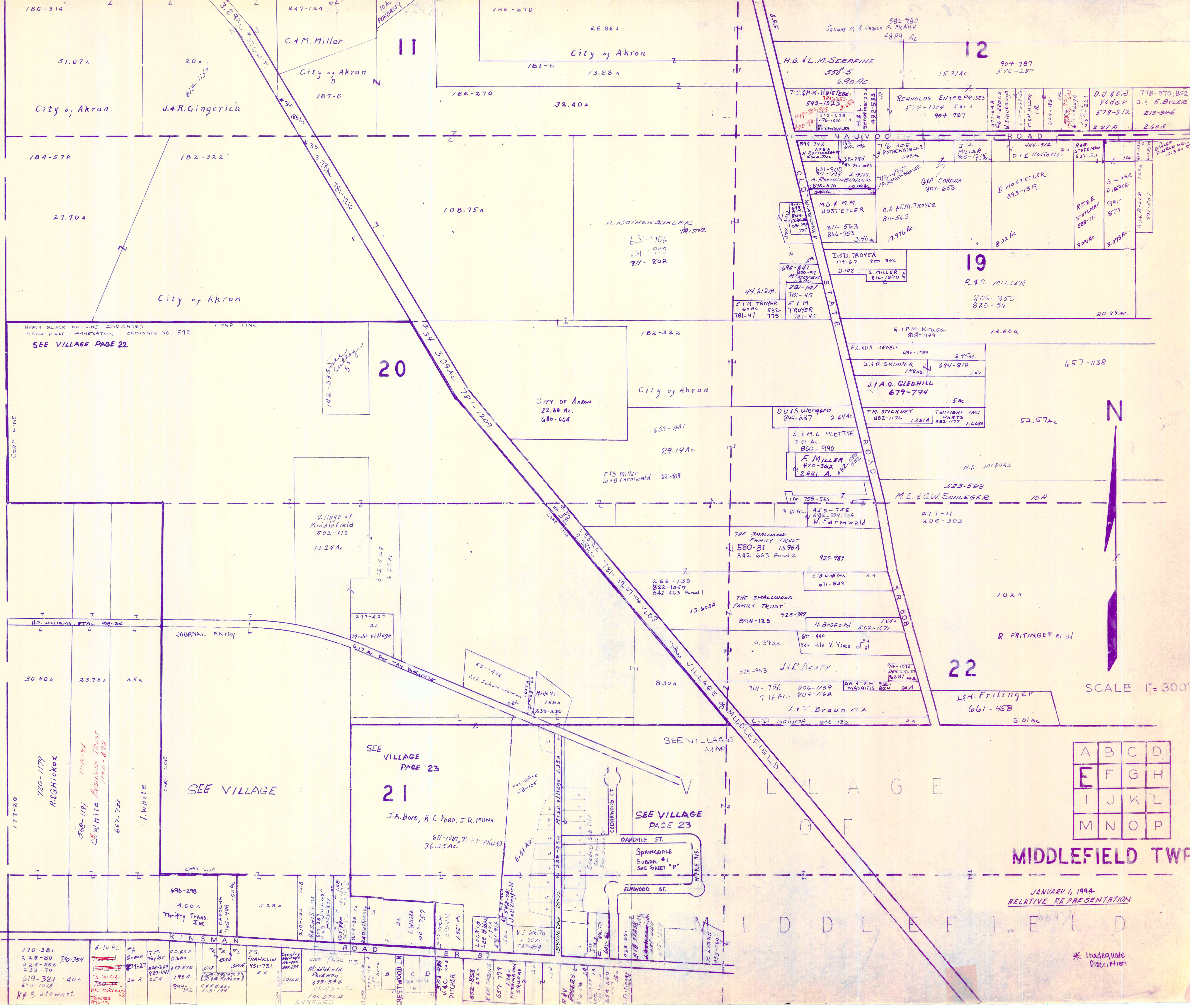
U. Cunningham
637-401
5.001Ac.

W.D. TOTH
559-244
6 Ac.
574-1035
4 Ac.
W.D. TOTH
623-31
16 Ac.

J.D. & D.L. TOTH
873-1038
2.5Ac
192-95
217-601
R.L. + S.K. TOTH
DEED 19.5 Ac
EXCLUDING R.R.
623-139 = 22 Ac 19.38 - TAX DUP
TAX DUPLICATE = 21.38 Ac

SCALE 1" = 300'

BURTON TOWNSHIP



186-314

51.07A

184-578

27.70A

HEAVY BLACK OUTLINE INDICATES MIDDLE FIELD ANNEXATION ORDINANCE NO. 592
SEE VILLAGE PAGE 22

30.50A

220-1179
R. G. Hickox

170-381

170-381

225-80

225-568

233-70

20A

182-322

182-322

182-322

23.75A

569-1191

11-16-94

C.B. White Business Trust

1990-873

696-299

4.60A

Thrifty Trans. Inc.

619-321

40A

619-321

619-321

20A

182-322

182-322

182-322

23.75A

569-1191

11-16-94

C.B. White Business Trust

1990-873

696-299

4.60A

Thrifty Trans. Inc.

619-321

40A

619-321

619-321

20A

182-322

182-322

182-322

23.75A

569-1191

11-16-94

C.B. White Business Trust

1990-873

696-299

4.60A

Thrifty Trans. Inc.

619-321

40A

619-321

619-321

20A

182-322

182-322

182-322

23.75A

569-1191

11-16-94

C.B. White Business Trust

1990-873

696-299

4.60A

Thrifty Trans. Inc.

619-321

40A

619-321

619-321

20A

182-322

182-322

182-322

23.75A

569-1191

11-16-94

C.B. White Business Trust

1990-873

696-299

4.60A

Thrifty Trans. Inc.

619-321

40A

619-321

619-321

20A

182-322

182-322

182-322

23.75A

569-1191

11-16-94

C.B. White Business Trust

1990-873

696-299

4.60A

Thrifty Trans. Inc.

619-321

40A

619-321

619-321

20A

182-322

182-322

182-322

23.75A

569-1191

11-16-94

C.B. White Business Trust

1990-873

696-299

4.60A

Thrifty Trans. Inc.

619-321

40A

619-321

619-321

20A

182-322

182-322

182-322

23.75A

569-1191

11-16-94

C.B. White Business Trust

1990-873

696-299

4.60A

Thrifty Trans. Inc.

619-321

40A

619-321

619-321

20A

182-322

182-322

182-322

23.75A

569-1191

11-16-94

C.B. White Business Trust

1990-873

696-299

4.60A

Thrifty Trans. Inc.

619-321

40A

619-321

619-321

20A

182-322

182-322

182-322

23.75A

569-1191

11-16-94

C.B. White Business Trust

1990-873

696-299

4.60A

Thrifty Trans. Inc.

619-321

40A

619-321

619-321

20A

182-322

182-322

182-322

23.75A

569-1191

11-16-94

C.B. White Business Trust

1990-873

696-299

4.60A

Thrifty Trans. Inc.

619-321

40A

619-321

619-321

20A

182-322

182-322

182-322

23.75A

569-1191

11-16-94

C.B. White Business Trust

1990-873

696-299

4.60A

Thrifty Trans. Inc.

619-321

40A

619-321

619-321

20A

182-322

182-322

182-322

23.75A

569-1191

11-16-94

C.B. White Business Trust

1990-873

696-299

4.60A

Thrifty Trans. Inc.

619-321

40A

619-321

619-321

20A

182-322

182-322

182-322

23.75A

569-1191

11-16-94

C.B. White Business Trust

1990-873

696-299

4.60A

Thrifty Trans. Inc.

619-321

40A

619-321

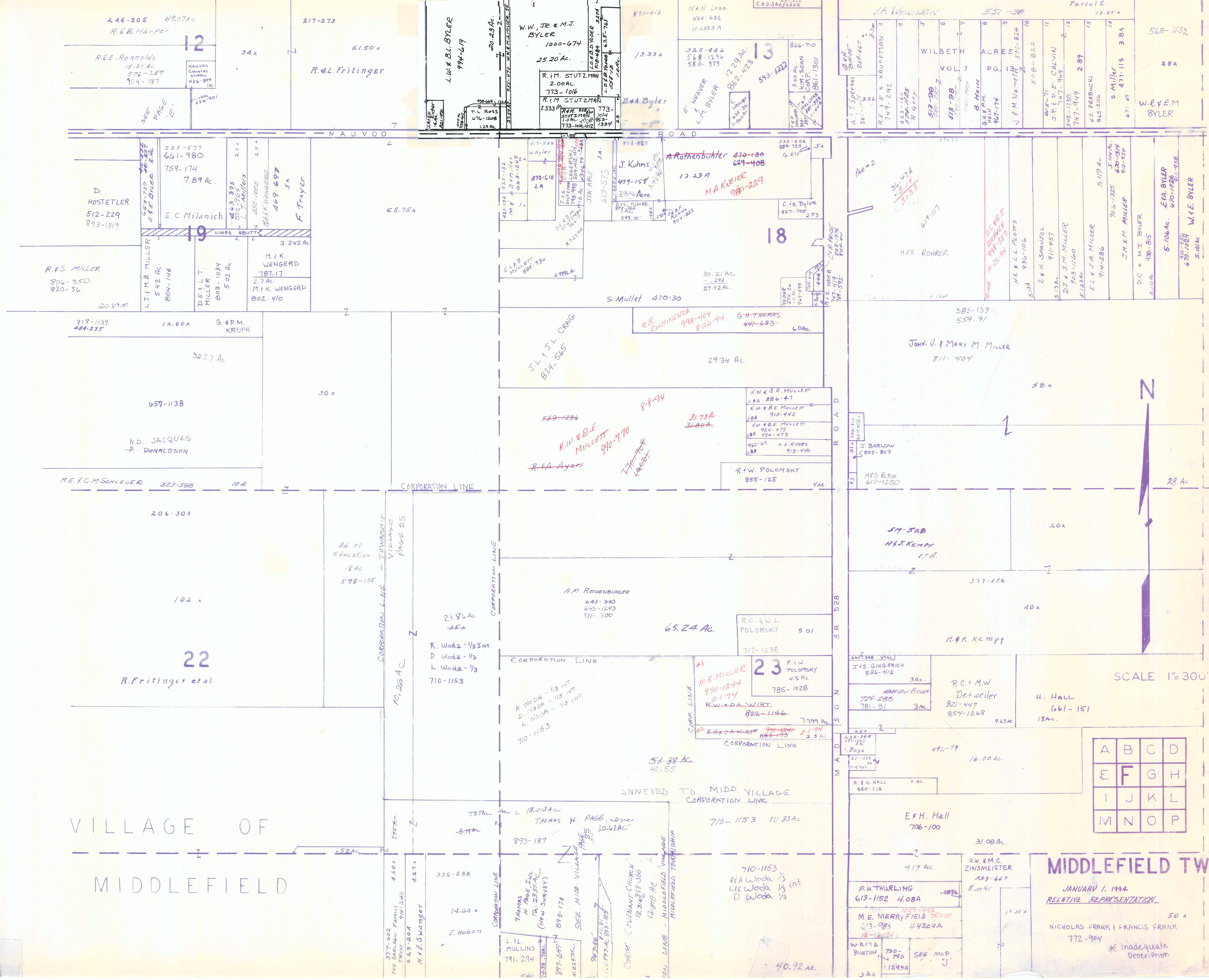
619-321

A	B	C	D
E	F	G	H
I	J	K	L
M	N	O	P

MIDDLEFIELD TWP

JANUARY 1, 1994
RELATIVE REPRESENTATION

* Inadequate
Description



VILLAGE OF
MIDDLEFIELD

MIDDLEFIELD TWP
 JANUARY 1, 1994
 RELATIVE REPRESENTATION
 NICHOLAS FRANK & FRANCIS FRANK
 772-904
 * Inadequate Description

A	B	C	D
E	F	G	H
I	J	K	L
M	N	O	P

J.F. WEIDMAN 551-38 Parcel C. 12.65 A

1	2	3	4	5	6	7	8	9	10	11	12	13	14	15	
WILBETH	ACRE	US	502-824	508-822	505-771	J.P. & D.E. CALVIN	542-1230	747-949	747-949	2.89	W.T. REBNUCKI	845-506	5 MILLER	477-115	3.8A

18

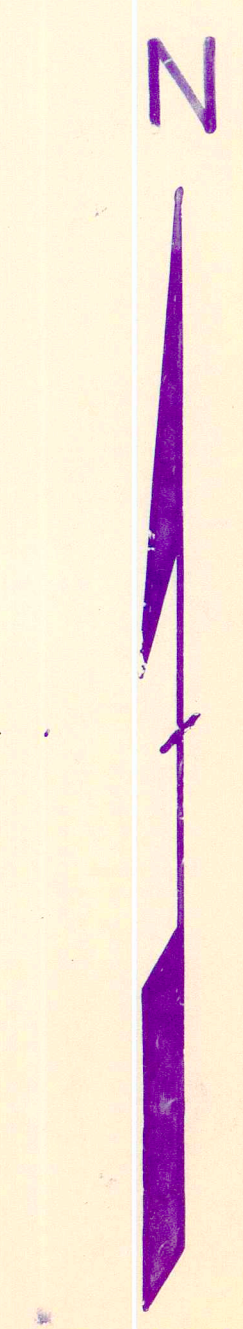
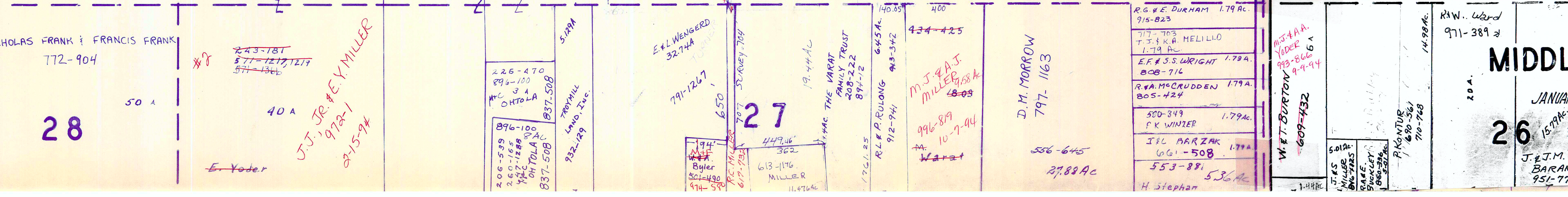
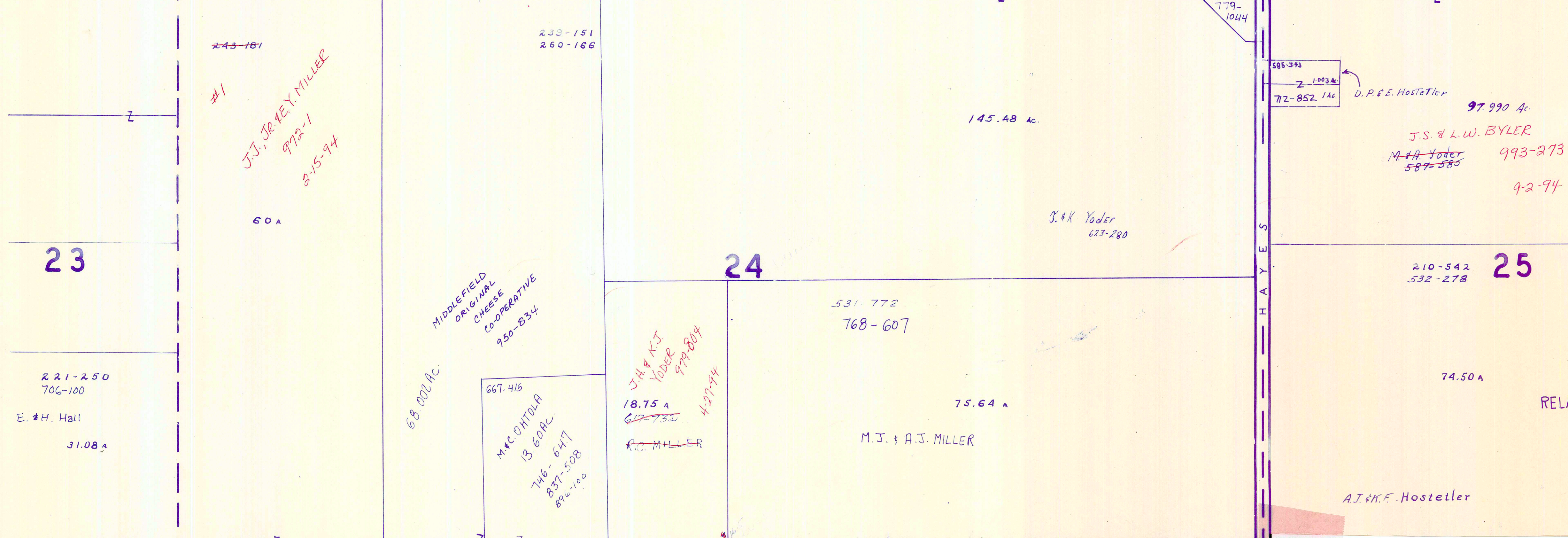
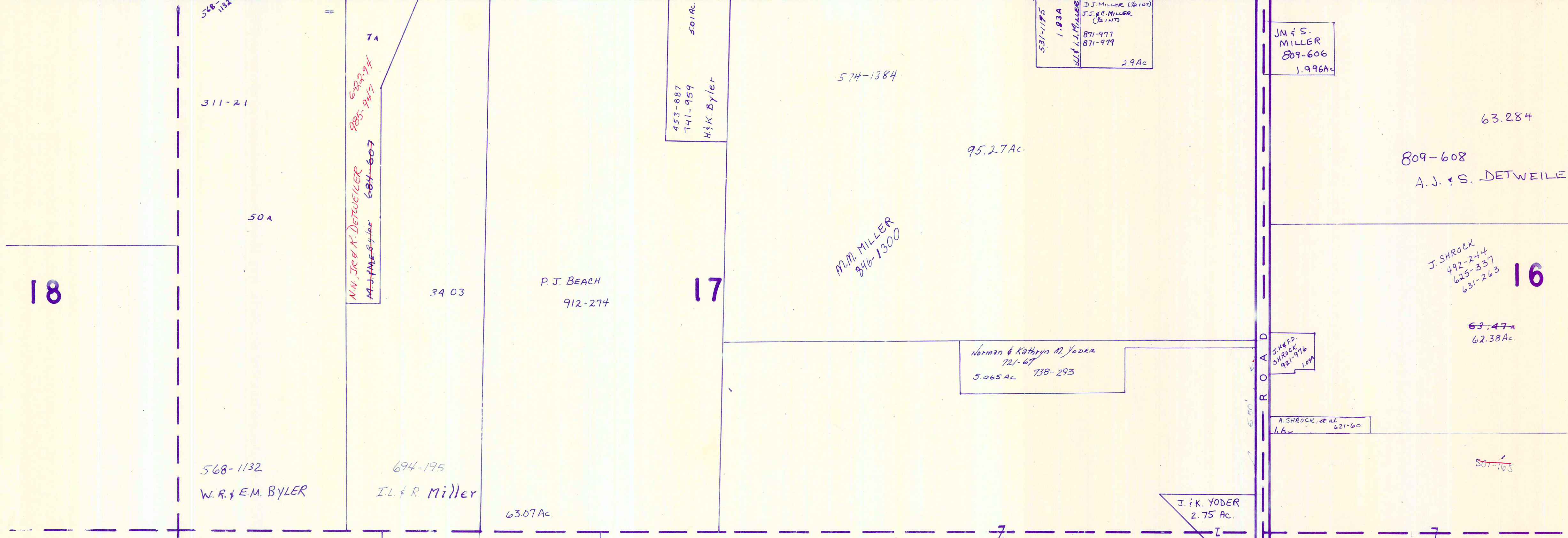
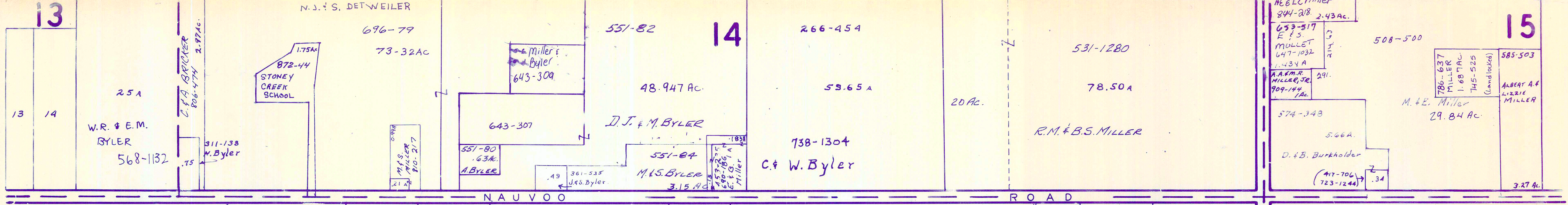
23

12

22



SCALE 1" = 300'



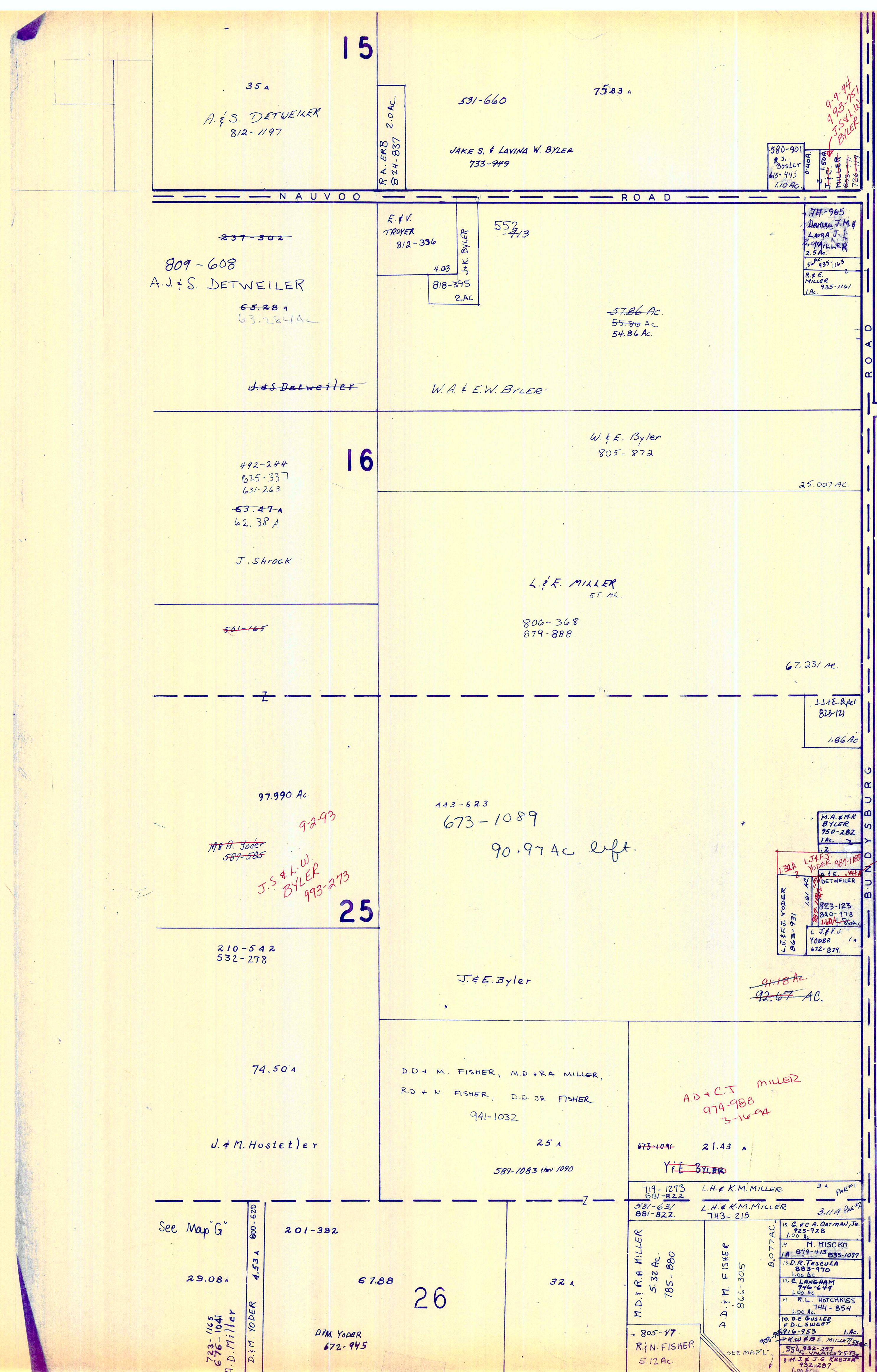
SCALE 1"=300'

RELATIVE REPRESENTATION

A	B	C	D
E	F	G	H
I	J	K	L
M	N	O	P

MIDDLEFIELD TWP.

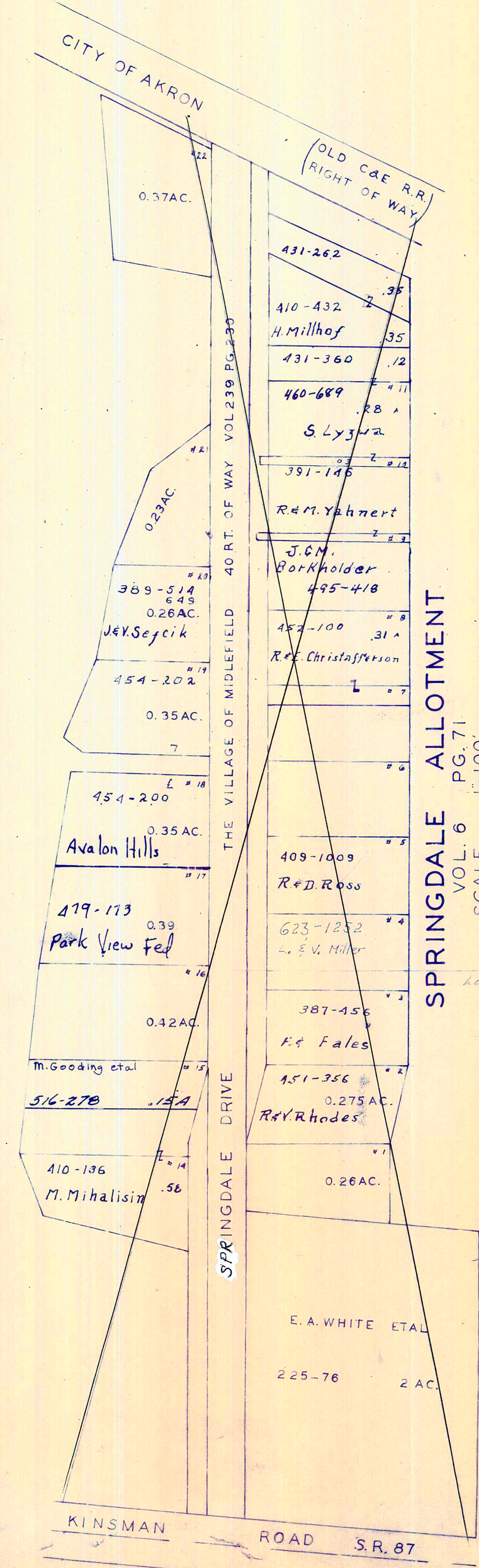
JANUARY 1, 1994
 *Inadequate Description
 D.M.
 1350 Yoder



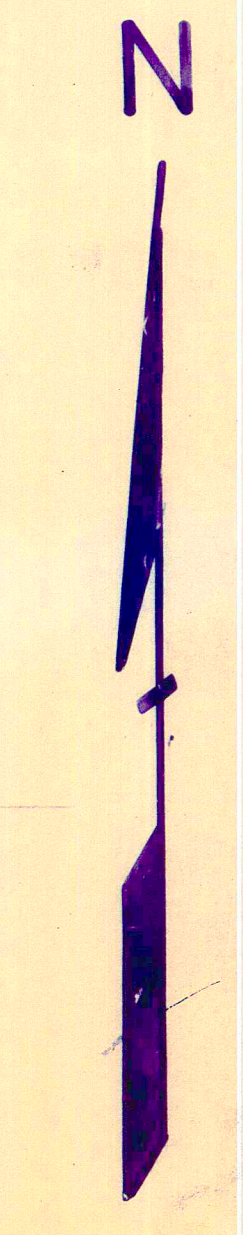
T R U M B U L L C O U N T Y

KINSMAN ROAD 87	
1	217-668
2	MARIA TOPARO 725-114
3	R.M. PETRICK 755-991
4	755-991
5	755-991
6	562-605
7	R.E.D. SMITH 629-295
8	R.F.S. MILLER
9	N.E. 81-44 KUSZMAUL 989-3411
10	836-105 VACATED
11	312-477
12	J. DEWADSEY 637-573
13	L.F. BARDAWY 680-1086
14	824-897
15	R.T. & S.L. KASER 967-903
16	576-910
17	879-80
18	M.R. B. chidem 4 85-425
19	J.J. CHERNY 894-671
20	T.R. MOSS 10-22-92
21	T. & U. GILFERT 703-1299

315-363 Agreement of Restriction
 CRESTWOOD SUB. DIV.
 VOL. 6 PG 77
 LOT 30
 SCALE 1"=200'



SPRINGDALE ALLOTMENT
 VOL. 6 PG. 71
 SCALE 1"=100'
 See Page 17



SCALE 1"=300'

* Inadequate Description

JANUARY 1, 1994

A	B	C	D
E	F	G	H
I	J	K	L
M	N	O	P

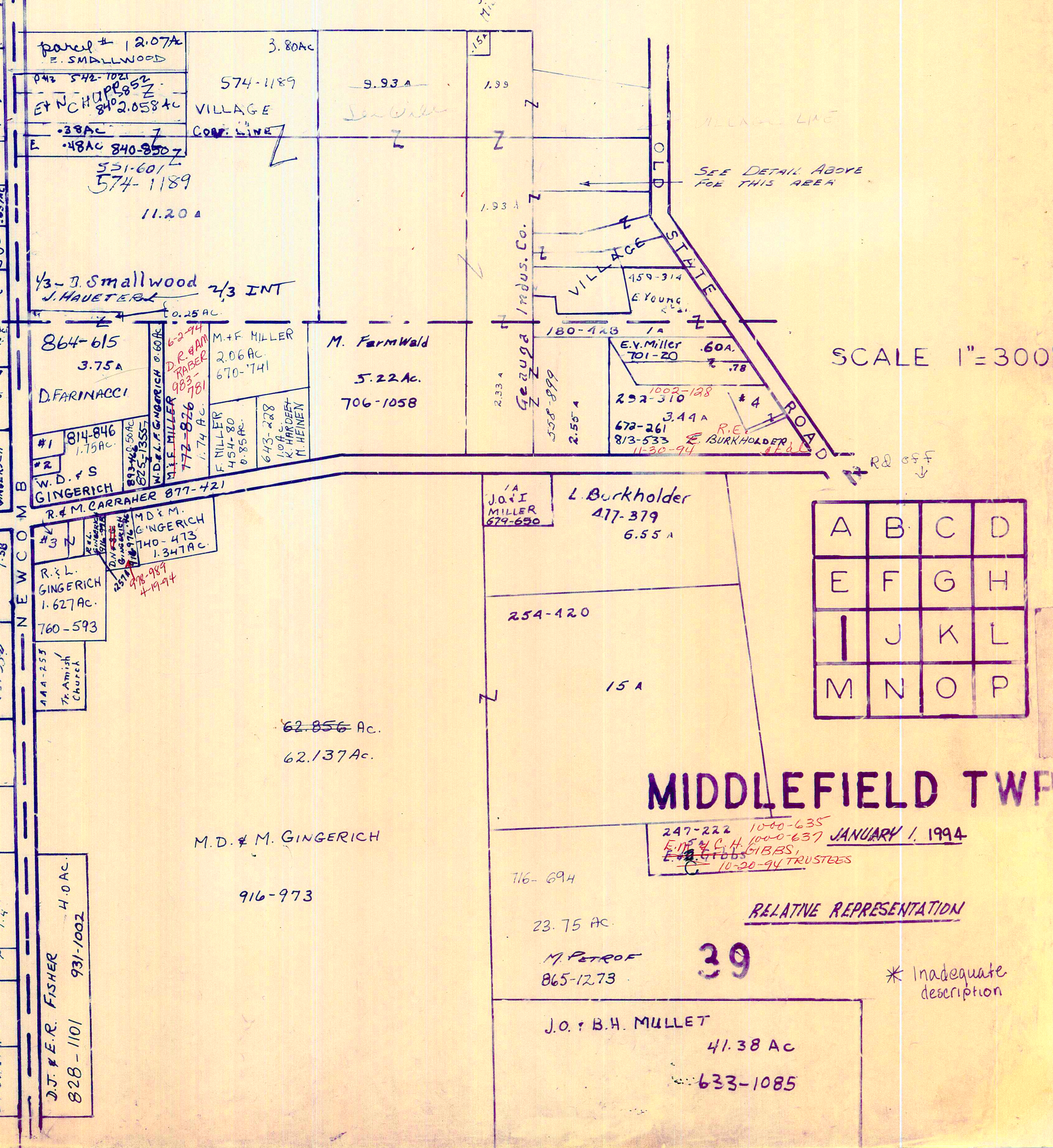
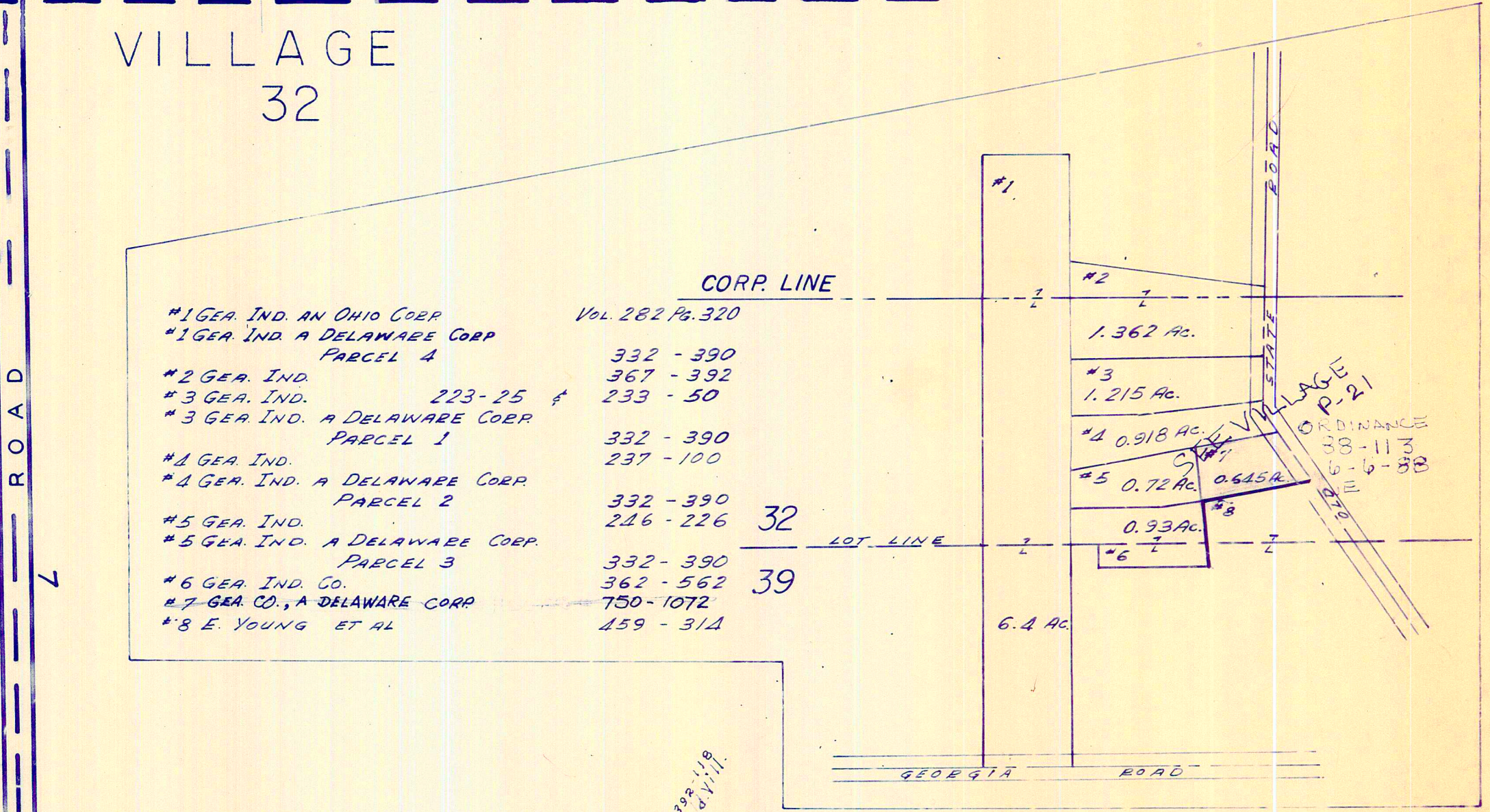
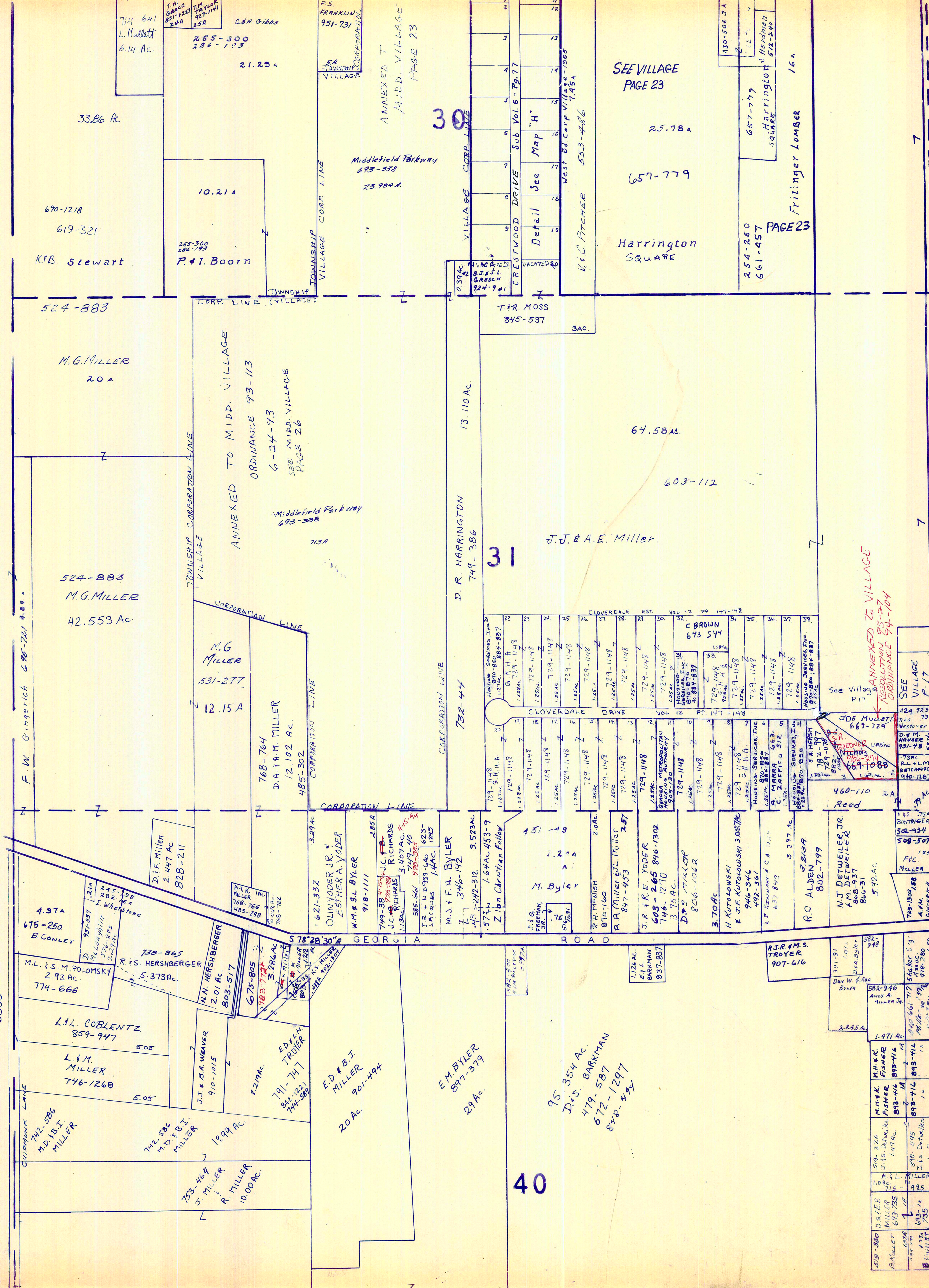
MIDDLEFIELD TWP.
 RELATIVE REPRESENTATION

BURTON TOWNSHIP

MIDDLEFIELD

29

1 286-534 J. KUMHALL 1039 25 A
2 A.L. GINGERICH 577-697 16 A
3 532-427 R.L. GINGERICH 50 A
4 513-18 J. U. WER 56 A



SCALE 1"=300'

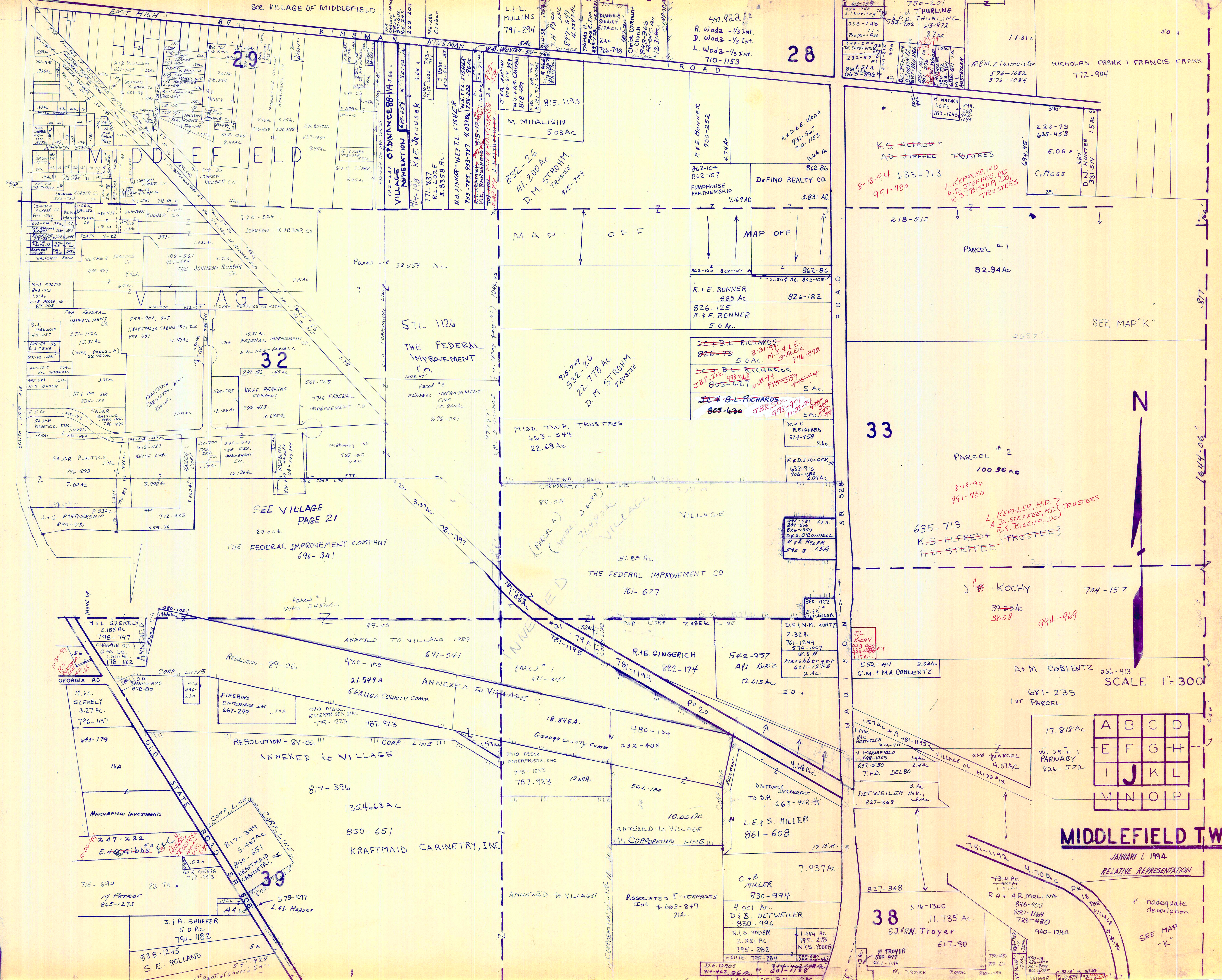
MIDDLEFIELD TWP

247-222 1066-635
R.L. GINGERICH 1066-637
JANUARY 1, 1994
1066-635 TRUSTEES

RELATIVE REPRESENTATION

39

* Inadequate description



28

29

32

33

30

38

N

MIDDLEFIELD TWP.

JANUARY 1, 1994

RELATIVE REPRESENTATION

Inadequate description

SEE MAP "K"

SCALE 1" = 300'

A	B	C	D
E	F	G	H
I	J	K	L
M	N	O	P

750-201
J. THURLING
750-202 613-972

750-203
J. THURLING
750-204 613-972

750-205
J. THURLING
750-206 613-972

750-207
J. THURLING
750-208 613-972

750-209
J. THURLING
750-210 613-972

82-104
82-107
PUMPHOUSE PARTNERSHIP
4.46 AC

82-86
DeFINO REALTY CO.
5.831 AC

82-109
82-107
R. E. BONNER
4.85 AC

826-125
R. E. BONNER
5.0 AC

826-43
B. L. RICHARDS
5.0 AC

805-627
B. L. RICHARDS
5.0 AC

805-630
B. L. RICHARDS
5.0 AC

826-43
B. L. RICHARDS
5.0 AC

805-627
B. L. RICHARDS
5.0 AC

805-630
B. L. RICHARDS
5.0 AC

826-43
B. L. RICHARDS
5.0 AC

805-627
B. L. RICHARDS
5.0 AC

805-630
B. L. RICHARDS
5.0 AC

826-43
B. L. RICHARDS
5.0 AC

805-627
B. L. RICHARDS
5.0 AC

805-630
B. L. RICHARDS
5.0 AC

826-43
B. L. RICHARDS
5.0 AC

805-627
B. L. RICHARDS
5.0 AC

805-630
B. L. RICHARDS
5.0 AC

826-43
B. L. RICHARDS
5.0 AC

805-627
B. L. RICHARDS
5.0 AC

805-630
B. L. RICHARDS
5.0 AC

826-43
B. L. RICHARDS
5.0 AC

805-627
B. L. RICHARDS
5.0 AC

805-630
B. L. RICHARDS
5.0 AC

K.S. ALFRED +
A.D. STEFFEE TRUSTEES

8-18-94 635-713
991-780

L. KEPPLER, MD
A.D. STEFFEE, MD
R.S. BISCOUP, DO
TRUSTEES

218-513

PARCEL # 1

82.94 AC

SEE MAP "K"

PARCEL # 2

100.56 AC

8-18-94
991-780

L. KEPPLER, MD
A.D. STEFFEE, MD
R.S. BISCOUP, DO
TRUSTEES

635-713

K.S. ALFRED +
A.D. STEFFEE TRUSTEES

J.C. KOCHY

704-157

39.25 AC
38.08

994-969

52-44 2.02 AC

G.M. + M.A. COBLENTZ

366-413

681-235

1ST PARCEL

17.818 AC

A B C D
E F G H
I J K L
M N O P

W. JR. + J. PARNABY
826-572

827-368

DETWEILER INV. INC.

3 AC

827-368

827-368

DETWEILER INV. INC.

3 AC

827-368

815-1193

M. MIHALISIN
5.03 AC

832-26
41.200 AC
D.M. STROMM, TRUSTEE
95-749

826-107

PUMPHOUSE PARTNERSHIP
4.46 AC

826-122
R. E. BONNER
4.85 AC

826-125

R. E. BONNER
5.0 AC

826-125

R. E. BONNER
5.0 AC

826-125

R. E. BONNER
5.0 AC

826-125

R. E. BONNER
5.0 AC

826-125

R. E. BONNER
5.0 AC

826-125

R. E. BONNER
5.0 AC

826-125

R. E. BONNER
5.0 AC

815-1193

M. MIHALISIN
5.03 AC

832-26
41.200 AC
D.M. STROMM, TRUSTEE
95-749

826-107

PUMPHOUSE PARTNERSHIP
4.46 AC

826-122
R. E. BONNER
4.85 AC

826-125

R. E. BONNER
5.0 AC

826-125

R. E. BONNER
5.0 AC

826-125

R. E. BONNER
5.0 AC

826-125

R. E. BONNER
5.0 AC

826-125

R. E. BONNER
5.0 AC

826-125

R. E. BONNER
5.0 AC

826-125

R. E. BONNER
5.0 AC

815-1193

M. MIHALISIN
5.03 AC

832-26
41.200 AC
D.M. STROMM, TRUSTEE
95-749

826-107

PUMPHOUSE PARTNERSHIP
4.46 AC

826-122
R. E. BONNER
4.85 AC

826-125

R. E. BONNER
5.0 AC

826-125

R. E. BONNER
5.0 AC

826-125

R. E. BONNER
5.0 AC

826-125

R. E. BONNER
5.0 AC

826-125

R. E. BONNER
5.0 AC

826-125

R. E. BONNER
5.0 AC

826-125

R. E. BONNER
5.0 AC

815-1193

M. MIHALISIN
5.03 AC

832-26
41.200 AC
D.M. STROMM, TRUSTEE
95-749

826-107

PUMPHOUSE PARTNERSHIP
4.46 AC

826-122
R. E. BONNER
4.85 AC

826-125

R. E. BONNER
5.0 AC

826-125

R. E. BONNER
5.0 AC

826-125

R. E. BONNER
5.0 AC

826-125

R. E. BONNER
5.0 AC

826-125

R. E. BONNER
5.0 AC

826-125

R. E. BONNER
5.0 AC

826-125

R. E. BONNER
5.0 AC

815-1193

M. MIHALISIN
5.03 AC

832-26
41.200 AC
D.M. STROMM, TRUSTEE
95-749

826-107

PUMPHOUSE PARTNERSHIP
4.46 AC

826-122
R. E. BONNER
4.85 AC

826-125

R. E. BONNER
5.0 AC

826-125

R. E. BONNER
5.0 AC

826-125

R. E. BONNER
5.0 AC

826-125

R. E. BONNER
5.0 AC

826-125

R. E. BONNER
5.0 AC

826-125

R. E. BONNER
5.0 AC

826-125

R. E. BONNER
5.0 AC

815-1193

M. MIHALISIN
5.03 AC

832-26
41.200 AC
D.M. STROMM, TRUSTEE
95-749

826-107

PUMPHOUSE PARTNERSHIP
4.46 AC

826-122
R. E. BONNER
4.85 AC

826-125

R. E. BONNER
5.0 AC

826-125

R. E. BONNER
5.0 AC

826-125

R. E. BONNER
5.0 AC

826-125

R. E. BONNER
5.0 AC

826-125

R. E. BONNER
5.0 AC

826-125

R. E. BONNER
5.0 AC

826-125

R. E. BONNER
5.0 AC

815-1193

M. MIHALISIN
5.03 AC

832-26
41.200 AC
D.M. STROMM, TRUSTEE
95-749

826-107

PUMPHOUSE PARTNERSHIP
4.46 AC

826-122
R. E. BONNER
4.85 AC

826-125

R. E. BONNER
5.0 AC

826-125

R. E. BONNER
5.0 AC

826-125

R. E. BONNER
5.0 AC

826-125

R. E. BONNER
5.0 AC

826-125

R. E. BONNER
5.0 AC

826-125

R. E. BONNER
5.0 AC

826-125

R. E. BONNER
5.0 AC

28

50 Ac.
NICHOLAS FRANK; FRANCIS FRANK
772-904

243-181
571-1217, 1219
571-1366

40 Ac.

E. Yoder
J.J. JRAEY
973-1
92-1594

88.670 Ac.
M.C. OHTOLA
200-539
677-1283

27

E.L. WENGERD
32.74 Ac.
791-1267

M.F. BYLER
974-580
501-490
617 Ac.

R.C. MILLER
617-732
583 Ac.

T.L. & J.E. MILLER
613-1176
11.476 Ac.

THE VARTY FAMILY TRUST
19.44 Ac.
888-222
888-212

ALB. P. RULLING
912-941
912-941
912-941

M. WATZ
434-425
18.09 Ac.
R.A. TROVER
1004-444
MCCOY
976-879
10-774

P.R. MILLER
953-981
6.92 Ac.

D.M. Morrow
556-645
797-1163
27.88 Ac.

A.J. & M.L. COALENTZ
884-35
1.85 Ac.

H.T.S.A. BYLER
911-974
1.85 Ac.

R.I. Boggs
615-1128
571-286
1.85 Ac.

J.M. D. DAVENIER
763-421
1.85 Ac.

M.E.D. MAURO
816-1046
3 Ac.

W.A. ELM
577-60
3 Ac.

H. Stephen
553-881
1.16 Ac.

H.A. HUFFMAN
562-1350
5.13 Ac.

W.B. Socha
332-547
3 Ac.

R.W. Ward
971-389 *
20 Ac.

J.M. BARN
951-77
15.79 Ac.

D.M. YODER
854-532
1352 Ac.

C.W. Weaver
471-707
905-75

C.M. Moss
635-458
6.06 Ac.

M.H. HOSTETLER
987-498
1.65 Ac.

G.B. WILLIAMS
543-186
2.14 Ac.

C.S. MILLER
777-1237 to 1249
155

A.J. & M. LAHAR
BYLER 939-557

C.E. Shaver
502-995
3.22 Ac.

R.N. Smith
621-216
733-744
2 Ac.

B.C. Ruple
619-1248
1.98 Ac.

T.A.B. Zubolinsky
237-1
2.99 Ac.

R.D. ROSE
845-367
1.5 Ac.

M.L. BISHAM
Diamond
785-671

C.D. & E.M. FISHER
755-1097
2.10 Ac.

P.L. CAMERON
929-488
1.5 Ac.

E.T. J. LYONS
813-234
1.5 Ac.

J. SAWYER
417-872
1.2 Ac.

R.K. MURKIE
391-617
1.2 Ac.

A.T. WATSON
621-911
1.2 Ac.

J.E. TROTTER
893-234
1.2 Ac.

B.M. NICASTRO
753-1261
869-544
869-547
2 Ac.

R.D. BRZINIC
537-704
2 Ac.

218-513
82.94 Ac.

C.M. KENNEDY
L.M. WILSON
924-1076
1/5 Int. →
B.J. Shumate
636-99
1/5 Int. →
J.A.K. Yoder
589-412
1/5 Int. →

A.E. Byler
637-312
88.4 Ac.

D.D. J. & M.S. MILLER
556-1233
61.784 Ac.

J.A.B. KAMINSKI
542-725
18.69 Ac.

H. Howells, TRUSTEE
377-565
897-572
THE HOWELLS FAMILY TRUST
933-575
26.80 Ac.

I.R. Buttari
611-349
20 Ac.

D.D. MILLER
808-265
793-1294
E.H. & M.D. KEMPF
5.363 Ac.

S.N. MILLER
615-1240
5.3 Ac.

D. Miller et al.
239-254
46.23 Ac.

K.S. Alfred
A.D. Steffee
(Trustees)
653-713
818-94
991-780
L. KOPPLER, MD.
A.D. STEFFEE, MD.
K.S. BROWN, D.O.
TRUSTEES

P.W. & S.M. BELTCH
934-752
949-444
1/5 Int. →

JOE & MARY MILLER
427-384
773-173
949-807
104.79 Ac.

D.M. Miller
647-928
26.61 Ac.

S.N. Miller
700-1147
12.26 Ac.

J.R. Buttari
611-349
35 Ac.

E.A. Miller
512-1023 ; 810-908
84.56 Ac.

D.K. Fear
509-167
2 Ac.

Eli D.L. Miller
582-907, 908
11.18 Ac.

D.L. Miller
470-1006
91.69 Ac.

W. Kochy, Jr.
704-157
39.25 Ac.
38.08 Ac.
994-969

681-235
11 Ac.

W.F.N. Rosengreen
537-1199
81.94 Ac.

(DIMENSIONS QUESTIONABLE)
852-802 *
855-831, 3 *
4.1 Ac.

W.L. MILLER
782-1146
26.76 Ac.

J.A. Burkholder
703-1275
2.6 Ac.

S.F.R. YODER
787-1111
852-802
855-831, 3

R.W. Walker
454-982
1.10 Ac.

R.J. Fritz
425-186
2.20 Ac.

E.C. & L.J. SLABAUGH
848-1225
95 Ac.

31.58 Ac.
681-235
266-413

17.818 Ac.
W. Jr. & J. PARNABY
826-572
W. J. Parnaby Jr.
930-1166
13.312 Ac.

W.L. MILLER
782-1146
2.6 Ac.

J.A. Burkholder
703-1275
2.6 Ac.

V.L. Miller
843-322
1.14 Ac.

J.E.M. Miller
582-861
2.5 Ac.

A.E. Miller
653-254
2.6 Ac.

L.J. Kiviniemi
576-1193
2.8 Ac.

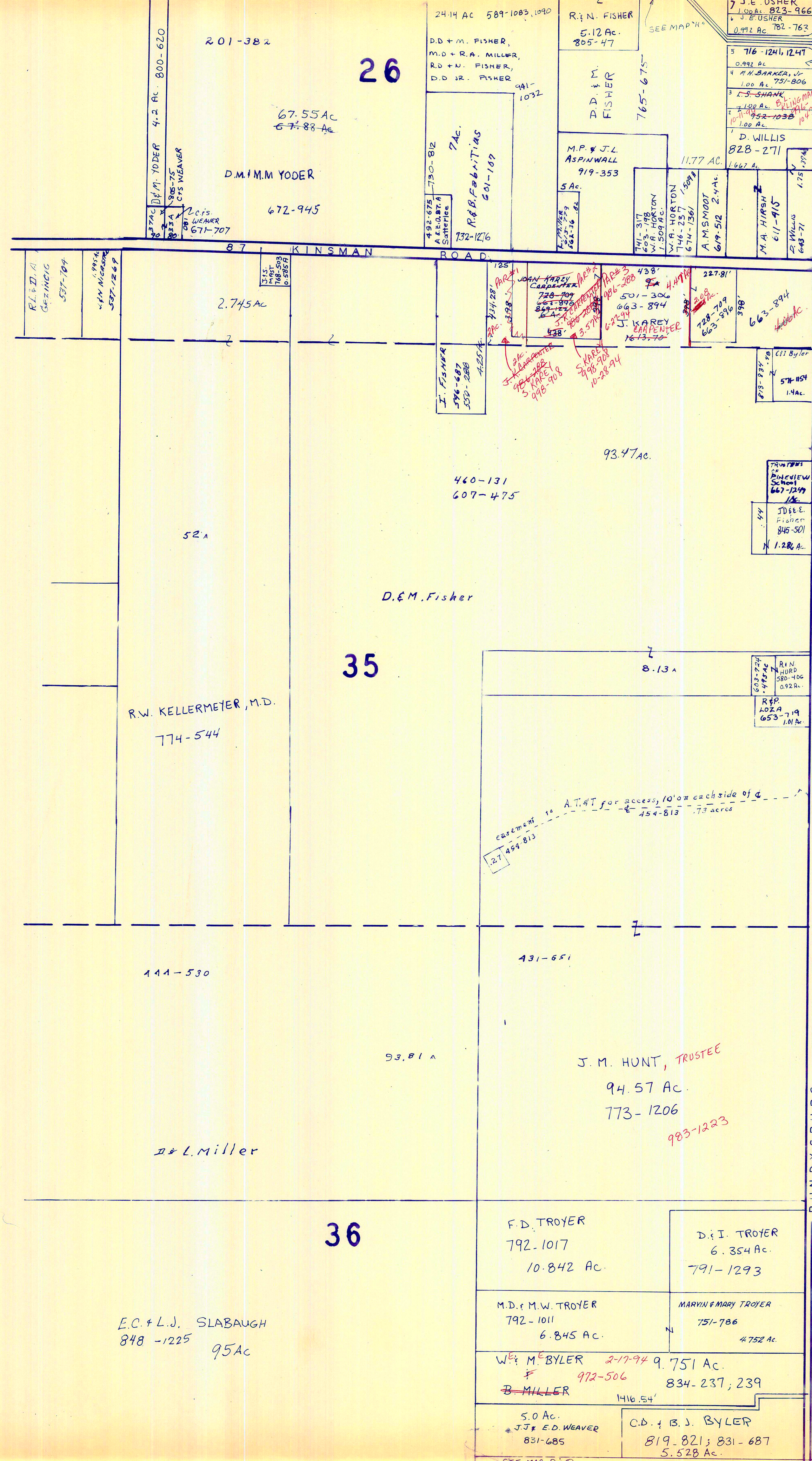
J.E. WEANER
568-558
NOTE: 57 Ac.
EXCEPTION OF 898-1225

JANUARY 1, 1994
RELATIVE REPRESENTATION

A	B	C	D
E	F	G	H
I	J	K	L
M	N	O	P

36 MIDDLEFIELD TWP.

* Inadequate description



BUNDYSBURG ROAD

T R U M B U L L C O U N T Y



SCALE 1"=300'

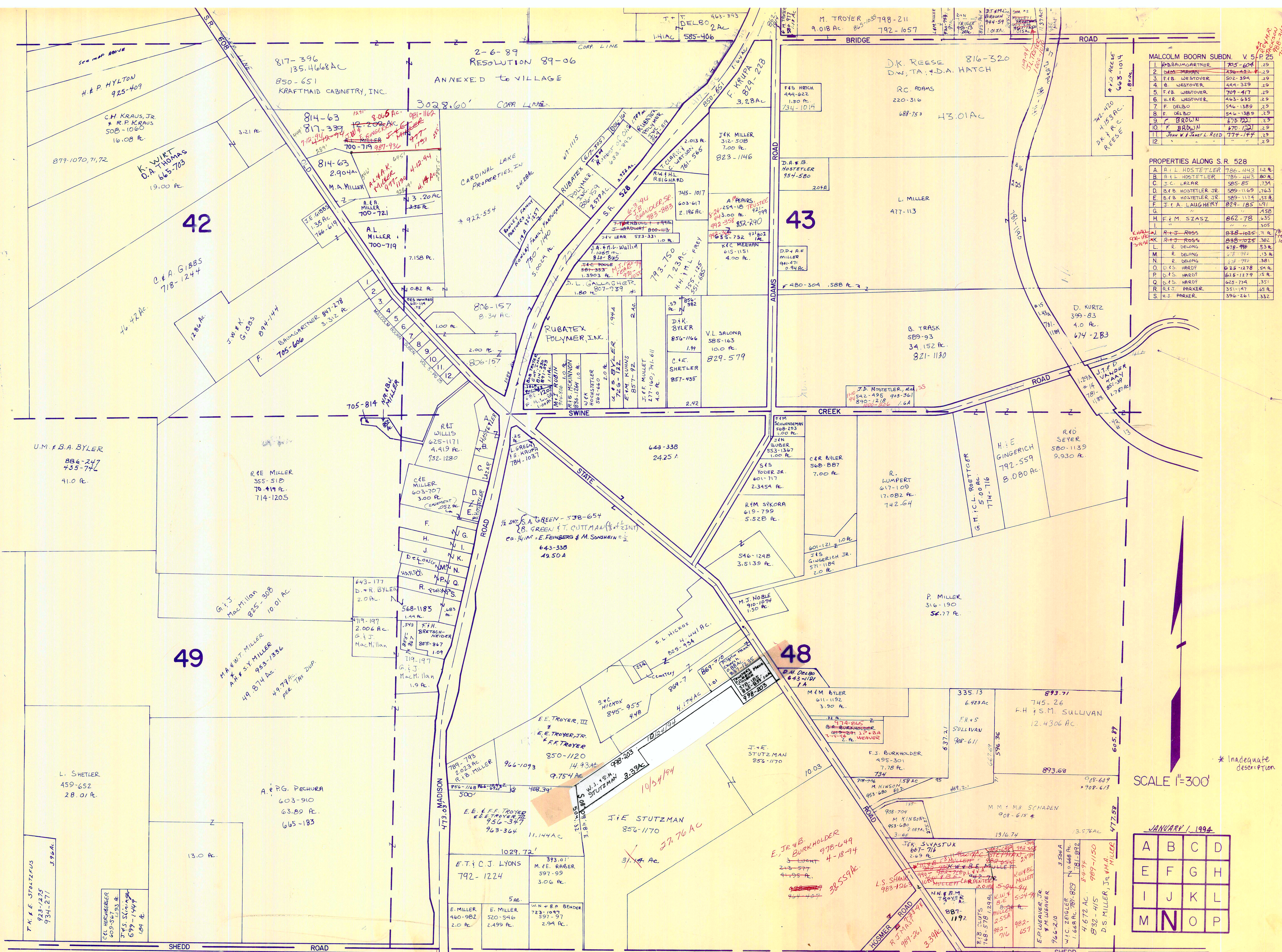
JANUARY 6, 1994

A	B	C	D
E	F	G	H
I	J	K	L
M	N	O	P

MIDDLEFIELD TWP.

RELATIVE REPRESENTATION

* Inadequate Description



MALCOLM BOORN SUBDN. V 5 P 25

1	B.B. WAGNER	755-604	1.29
2	WAGNER	756-624	1.29
3	F.B. WESTOVER	502-394	1.29
4	B. WESTOVER	444-329	1.29
5	F.B. WESTOVER	709-417	1.29
6	H.R. WESTOVER	463-635	1.29
7	F. DELBO	546-1389	1.29
8	F. DELBO	546-1389	1.29
9	F. BROWN	678-121	1.29
10	F. BROWN	678-121	1.29
11	John & Frances L. Reed	774-144	1.29
12			1.29

PROPERTIES ALONG S.R. 528

A	A.L. HOSTETLER	786-443	1.29
B	A.L. HOSTETLER	786-443	1.29
C	J.C. LARER	585-85	1.34
D	S.B. HOSTETLER JR	589-1169	1.63
E	S.B. HOSTETLER JR	589-1174	1.55
F	J.A. LAUGHERY	829-185	1.91
G			1.58
H	F.M. SZASZ	862-78	1.35
I			1.305
J	A.S. ROSS	838-1025	1.11
K	A.S. ROSS	838-1025	1.362
L	R. DELONG	678-788	1.38
M	R. DELONG	678-788	1.38
N	R. DELONG	678-788	1.38
O	D.S. HARDY	625-1278	1.58
P	D.S. HARDY	625-1278	1.58
Q	D.S. HARDY	625-1278	1.58
R	R.S. PARKER	351-17	1.65
S	H.J. PARKER	596-261	1.332

* Inadequate description

SCALE 1"=300'

JANUARY 1, 1994

A	B	C	D
E	F	G	H
I	J	K	L
M	N	O	P

P A R K M A N T O W N S H I P

MIDDLEFIELD TWP. "N"
RELATIVE REPRESENTATION

